

# SMART Response Lesson 3:

## Sign In Mode with Assessment

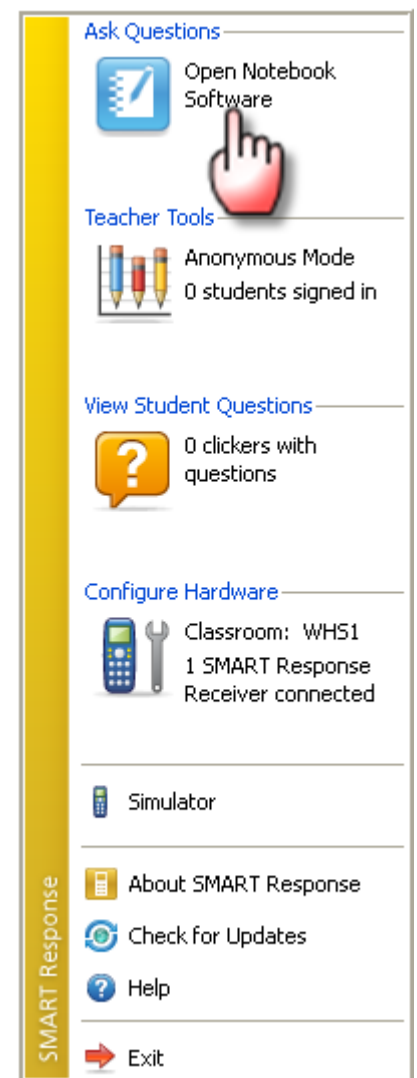
### Create an Assessment

By creating assessments, you can collect results for each question and for the entire assessment at the same time. You can print the assessment and copy it for students to use at their desks to answer the questions at their own page.

You can install SMART Response assessment software on a computer without the receiver in order to create assessments that can be used on another station.

Clickers are at their best when instructors use them to spark discussion and get students explaining concepts to one other. Clickers are much less effective when they are used sporadically or to test rote memorization.

**Click the Response icon in the notification area.**



The image shows two screenshots of the SMART Notebook software interface. The top screenshot displays the 'Welcome to Notebook Software' dialog box. The bottom screenshot shows the 'SMART Response Assessment Software' interface with the 'Insert Title Page' dialog box open.

**Callouts:**

- 1** Close this welcome window. (Points to the close button in the 'Welcome to Notebook Software' dialog box.)
- 2** Uncheck this box if needed. (Points to the 'Auto-hide' checkbox in the bottom left of the SMART Notebook window.)
- 3** Click the Response tab. (Points to the 'Response' tab in the left sidebar.)
- 1** (Points to the 'Title Page' button in the 'Add SMART Response content' section.)
- 2** (Points to the 'Title' field in the 'Insert Title Page' dialog box.)
- 3** (Points to the 'Type' dropdown menu in the 'Insert Title Page' dialog box.)
- 4** (Points to the 'Add' button in the 'Insert Title Page' dialog box.)

**SMART Response Assessment Software Interface:**

This page has no SMART Response content.

Add SMART Response content:

- Title Page
- Question
- Instant YN
- Instant VY
- Instant ABC
- Instant Num

[Import questions from a file](#)

**Learn more**

- [Feature help](#)
- [Teachers' Hub](#)
- [smarttech.com](#)

**Insert Title Page Dialog Box:**

**Assessment Information**

The information you enter here appears on the first page of your assessment. It also appears in your Teacher Tools gradebook when you start the assessment.

Title: Practice \* **2**

Example: Trig Quiz 1

Type: Quiz \* **3**

Subject: \_\_\_\_\_

Example: Mathematics

Topic: \_\_\_\_\_

Example: Trigonometry

\* Required

**4** Add Cancel

# Practice

Double click  
these fields to  
edit text.

Grade: «grade»  
Subject:  
Date: «date»

Untitled \* - SMART Notebook

File Edit View Insert Format Draw Respo

Practice  
Title page

Properties Progress Next Steps

**Description**

Title: Practice

Type: Quiz

Subject: Science

Topic: Moon

You can also edit  
the Description  
fields here.

Practice  
Title page

Properties Progress Next Steps

**Description**

Title: Practice

Type: Quiz

Subject: Science

Topic: Moon

**Summary**

This assessment has no questions in it.

[Add a question to the next page](#)

**Select the question type and click the Next> button.**

**Students use Y or N button to respond.**

**Students use buttons A-J to respond. 2-10 choices per question.**

**Students use number keys, fraction/decimal key to respond.**

**Students use T or F button to respond.**

**Students use A-J buttons to respond. 2-10 choices per question.**

**All types include the Opinion option.**

**2 Format text.**

**1 Type question.**

**3 Add tags if desired, to be used for data analysis.**

**4**

Janetta Garton • Willard R-II Schools



**Insert Question**

Select the correct answer:

☒ True

☐ False

☐ This is an opinion question

Points:

1

Notes: (These appear when you print results.)

Insert Another < Back Finish Cancel

1 Indicate the answer or choose Opinion.

3 Click here if this is the last question for this assessment.

3 Click here to add additional questions to this assessment.

File Edit View Insert Format Draw Response Help

moon

My Content  
Gallery Essentials  
Lesson Activity Toolkit 1.0  
Gallery Sampler  
Online Resources  
SMART Learning Marketplace  
Search Results for moon

Moon surface

Bats - flying Full moon


Io Light shining on Moon and...

2 Does the moon have 16 phases?

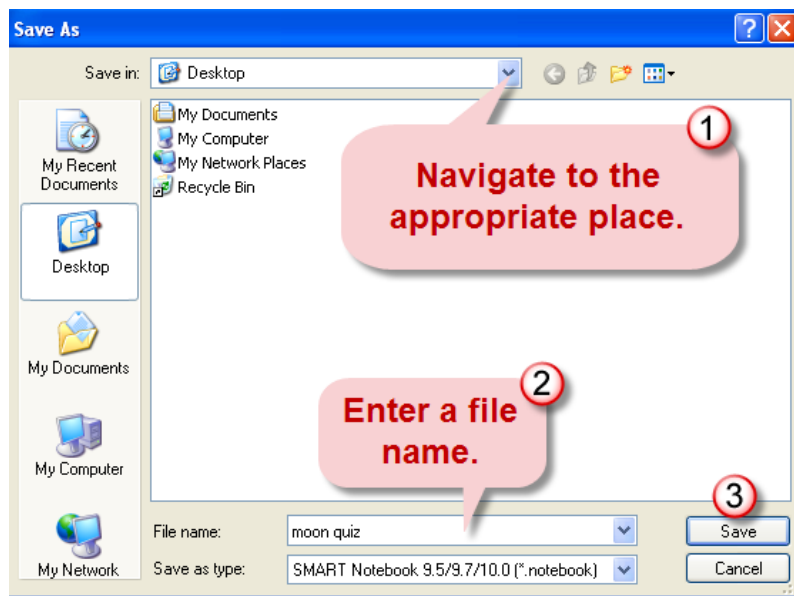
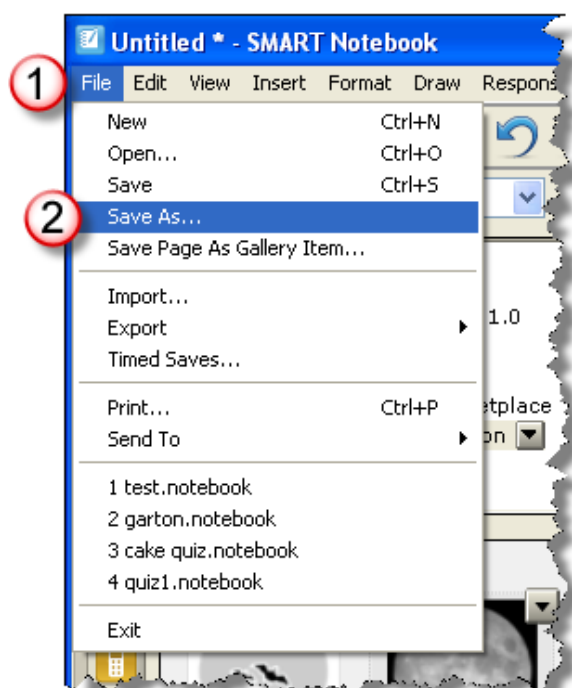
Yes

No

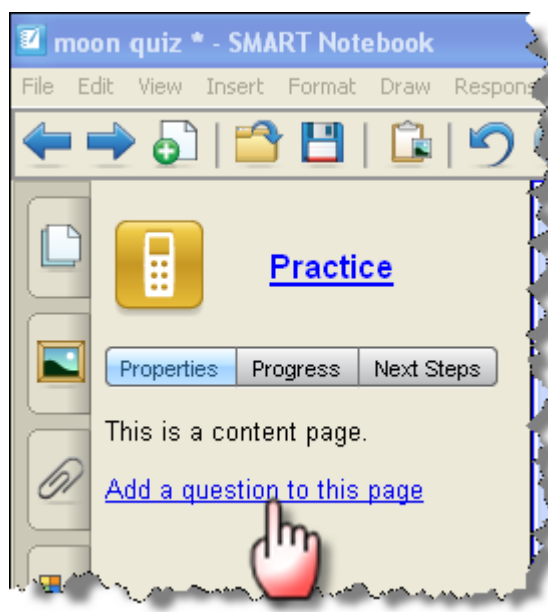
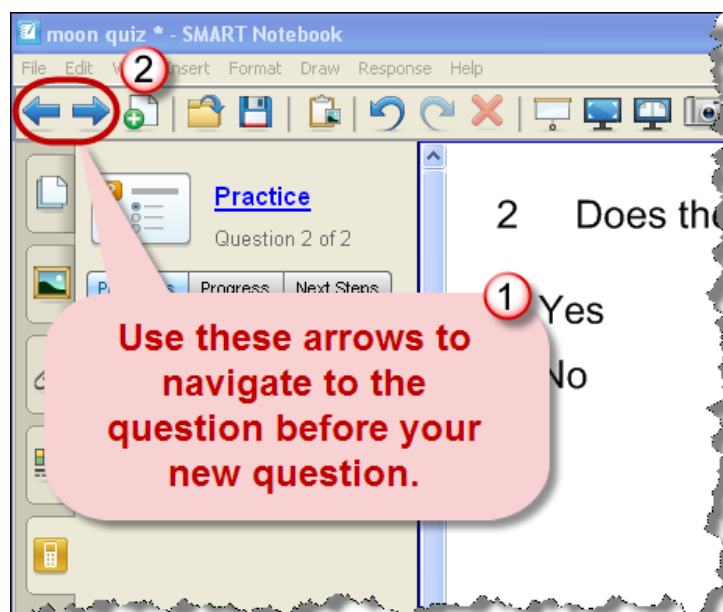
You can use the other Notebook tools to add images, audio, video, etc to any of the pages in your assessment.



## Save the Assessment

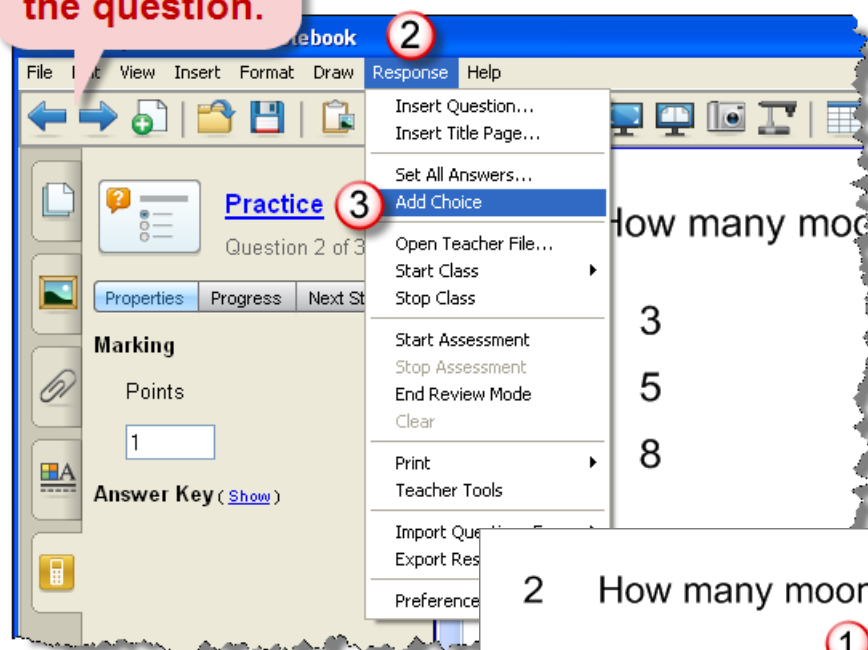


## Add Additional Questions



## Add More Choices to a Question

1 Navigate to the question.



1 Double click the new choice to edit the text.

2 How many moons does Jupiter have?

A 3

B 5

C 8

D <<double-click to edit>>

2 Click outside of the field when finished.

## Edit a Question's Text

**moon quiz - SMART Notebook**

File Edit View Insert Format Draw Response Help

Fonts: Arial 28 B I U [text formatting icons]

**Practice**  
Question 2 of 3

Properties Progress Next Steps

**Marking**  
Points  
1  
Answer Key (Show)

2 How many moons does Jupiter have?

A 3  
B 5  
C 8  
D 15

**You can double click any of the text to display it's editing box and make changes.**

## Students Sign-in to Complete Assessment

**Click the Response icon in the notification area.**

2:48 PM Wednesday

**Ask Questions**  
Open Notebook Software

**Teacher Tools**  
Anonymous Mode  
0 students signed in

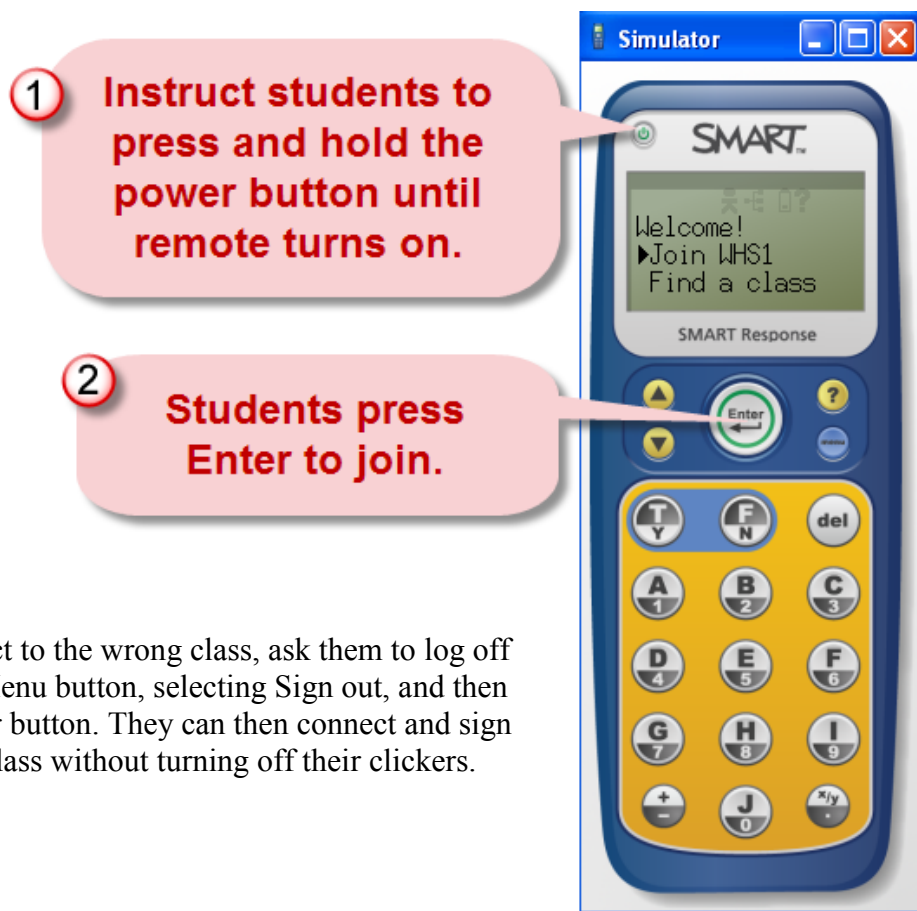
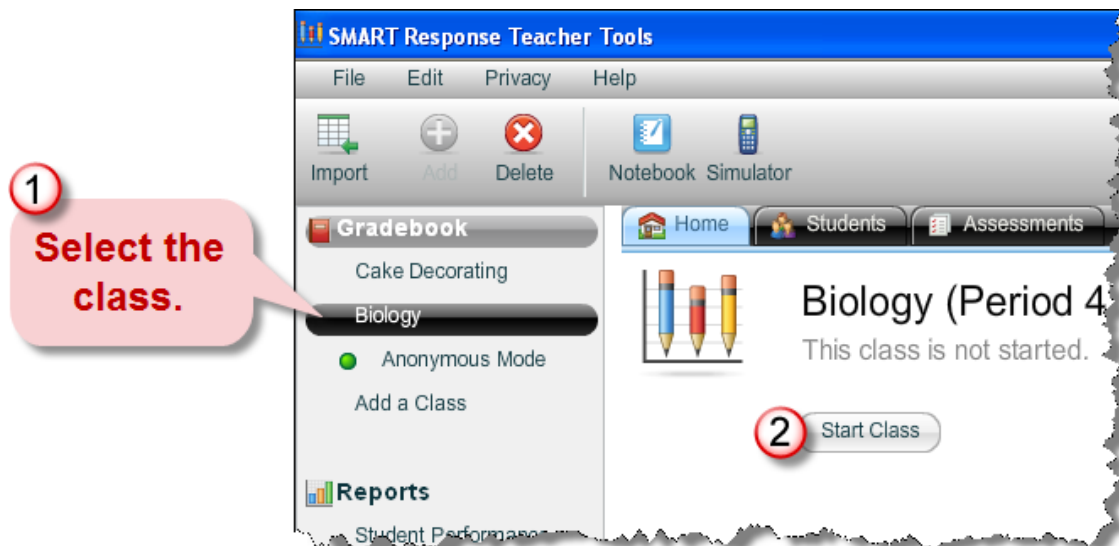
**View Student Questions**  
0 clickers with questions

**Configure Hardware**  
Classroom: WH51  
1 SMART Response Receiver connected

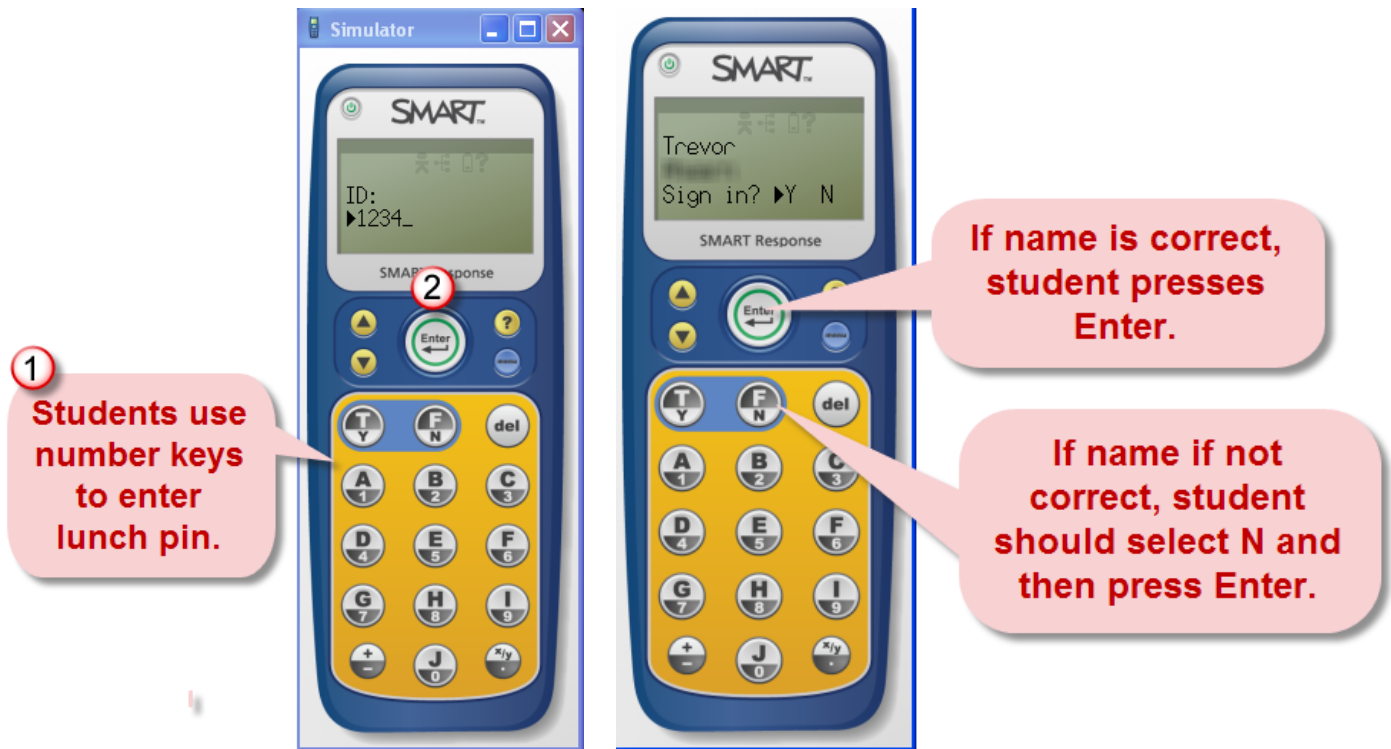
**Simulator**

**SMART Response**  
About SMART Response  
Activate SMART Response  
Help  
Exit

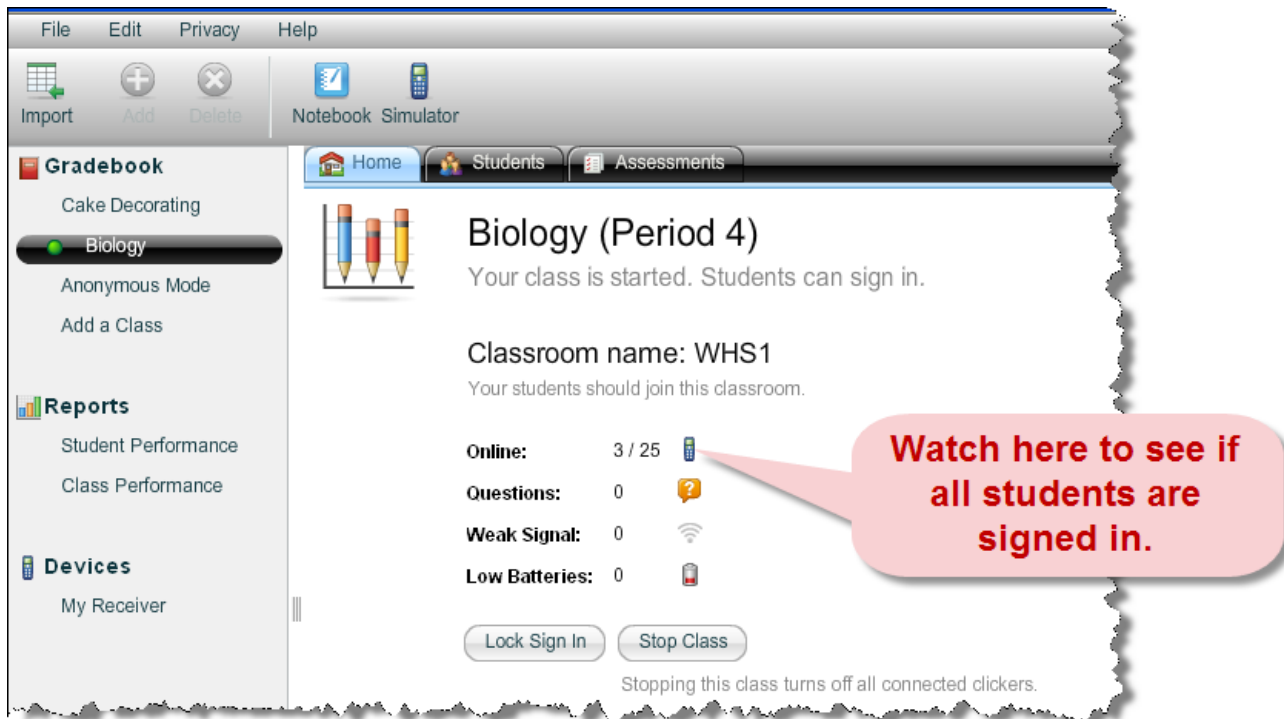




If students connect to the wrong class, ask them to log off by pressing the Menu button, selecting Sign out, and then pressing the Enter button. They can then connect and sign in to the correct class without turning off their clickers.



If an invalid ID number is entered, the display shows a message indicating that it was unable to sign in, with an option to try again.



**Gradebook**

- Cake Decorating
- Biology**
- Anonymous Mode
- Add a Class

**Reports**

- Student Performance
- Class Performance

**Devices**

- My Receiver

**Students**

Status	Student ID	Last Name
●	4	
●	3	
●		
○	2	Dylan
○	4	Haydn
○	4	Shelby
○	8	
○	3	

**Next steps**

- [Add students to your class](#)
- [Stop Class](#)

You can also click the **Students** tab to see who has signed in, indicated by a green ball in the **Status** column.

You can also view students' ID number here by setting Privacy to Off. Be sure not to display these numbers for the class to view.

## Start an Assessment

**SMART Response Teacher Tools**

File Edit Privacy Help

Import Add Delete Notebook Simulator

**Gradebook**

- Cake Decorating
- Biology**
- Anonymous Mode
- Add a Class

**Reports**

- Student Performance
- Class Performance

**Devices**

- My Receiver

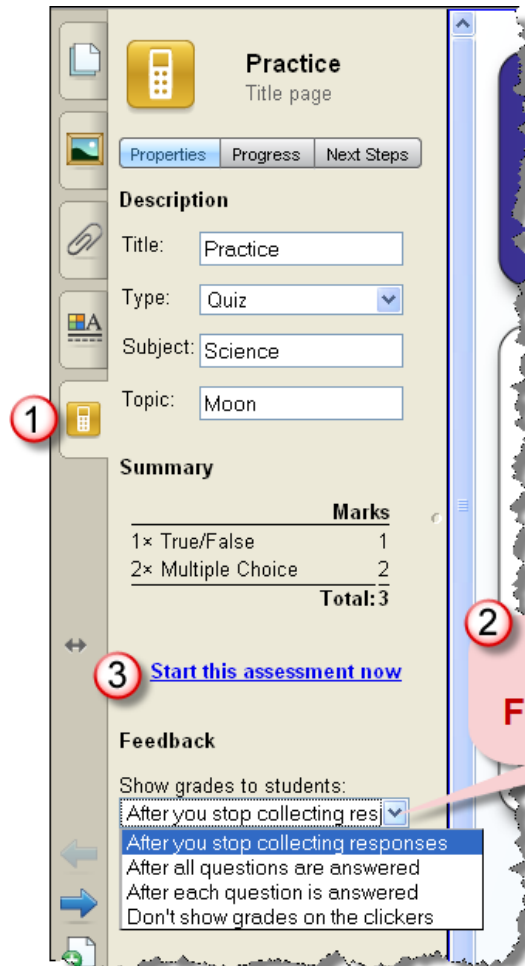
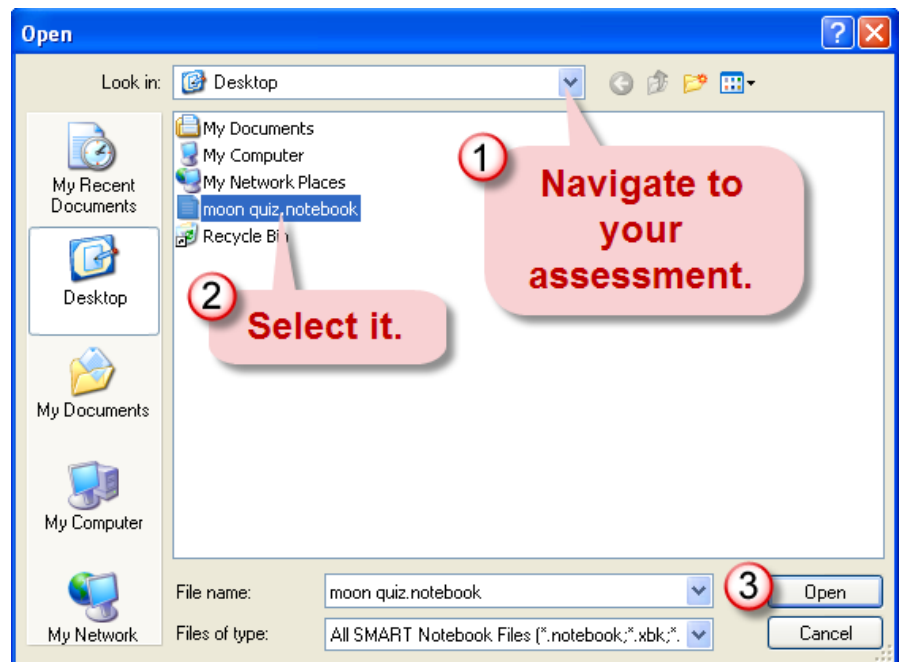
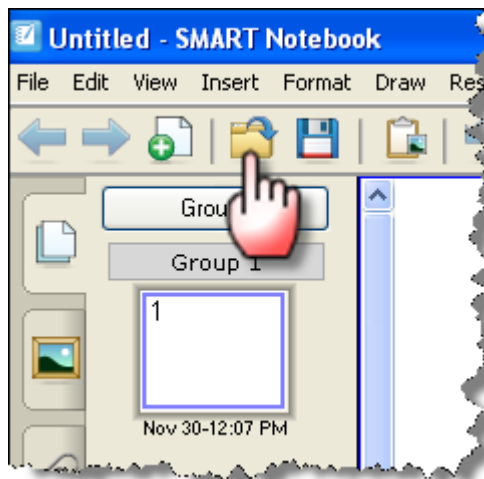
**Assessments**

Title	Subject	Topic	Type

**Next steps**

- [Import assessment results](#)
- [Start an assessment in SMART Notebook software](#)

Once all of your students have signed in, click the **Assessments** tab.



- **After you stop collecting responses:** The clicker shows how the students answered after you click the Stop button. Grades display after you click the Stop button.
- **After all questions are answered:** The clicker shows how the students answered, and displays their grades after they finish answering all questions.
- **After each question is answered:** The clicker shows how the students answered each question, and displays their grades after they finish answering all questions.
- **Don't show grades on clickers:** The clickers don't show results or grades.

**Indicate your Feedback choice.**

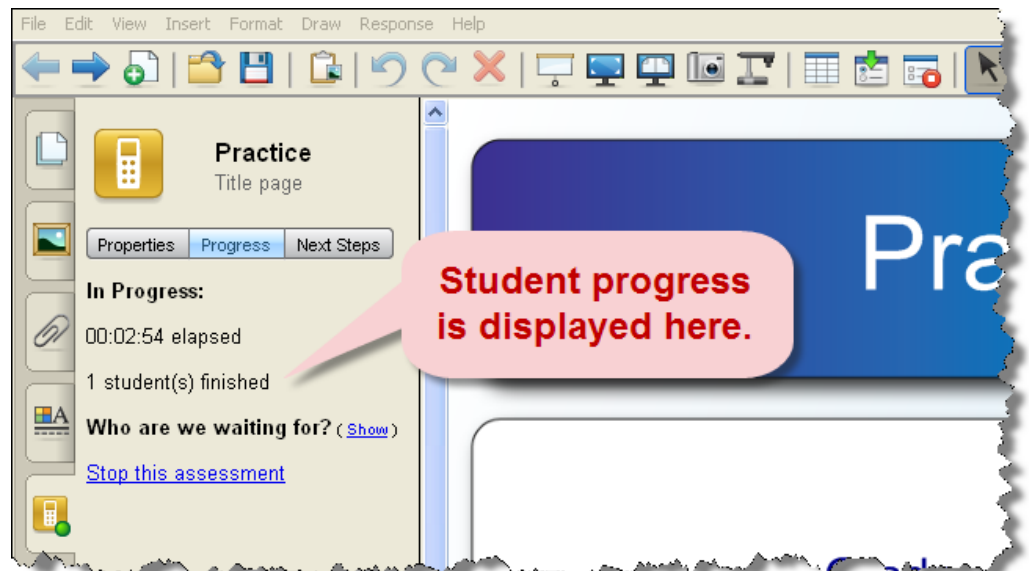


If you're projecting the questions on the screen, you can control the students' progress by selecting each question page in turn. If you provided printed students handouts, they can control their own pace.

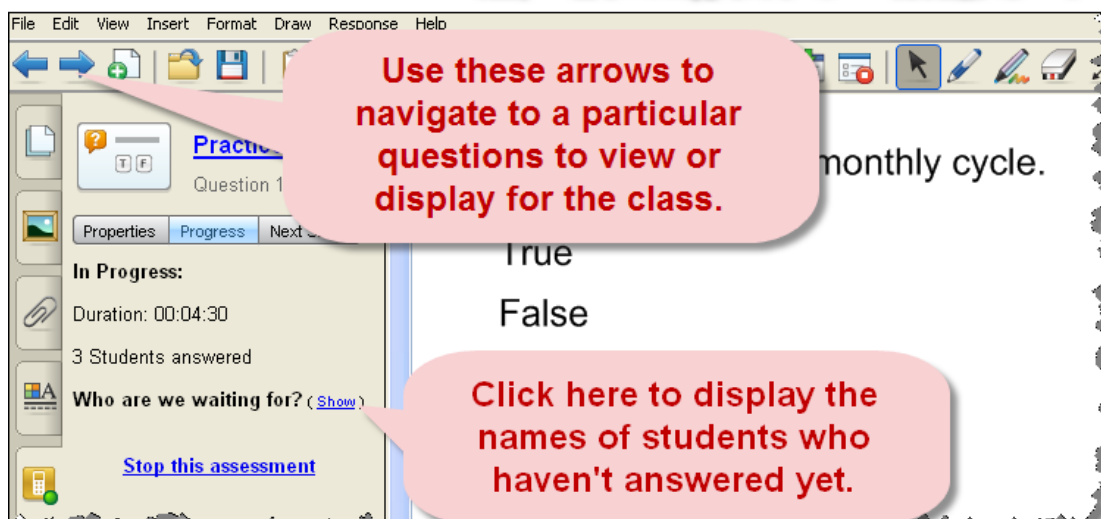


**Students use remote button to submit answers.**

If signed-in students turn off their clickers when a questions set is started, then turn on their clickers, sign in, and rejoin the assessment in progress without losing the answers they previously entered. If students anonymously reconnect, they lose any previously entered answers when they reconnect.



**Student progress is displayed here.**



**Use these arrows to navigate to a particular questions to view or display for the class.**

**Click here to display the names of students who haven't answered yet.**

File Edit View Insert Format Draw Response Help

Practice  
Question 1 of 3

Properties Progress Next Steps

In Progress:

Duration: 00:04:30

3 Students answered

Who are we waiting for? ([Show](#))

[Stop this assessment](#)

1 The moon has a monthly cycle.

True

**Click here to stop this assessment for all students, either when all students have finished all questions, or when you are out of time.**

File Edit View Insert Format Draw Response Help

Practice  
Question 3 of 3

Properties Results Next Steps

Summary

Correct Answer: A

Passed: 0

Duration: 00:00:02

[Insert chart into Notebook](#)  
[Show bar chart](#)  
[View overall results](#)

Details: ([Show](#))

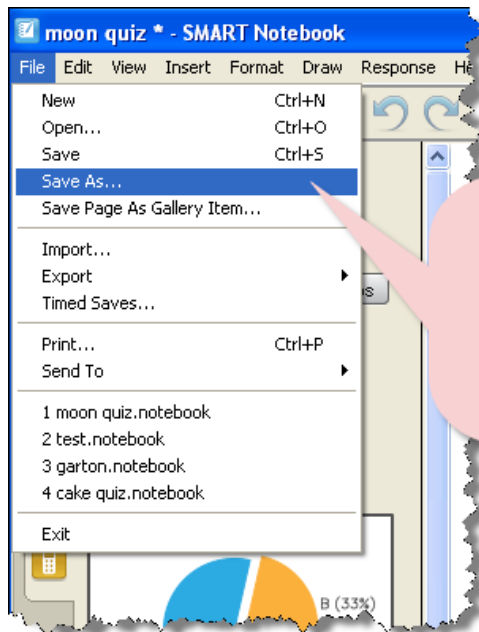
3 Do...

Yes

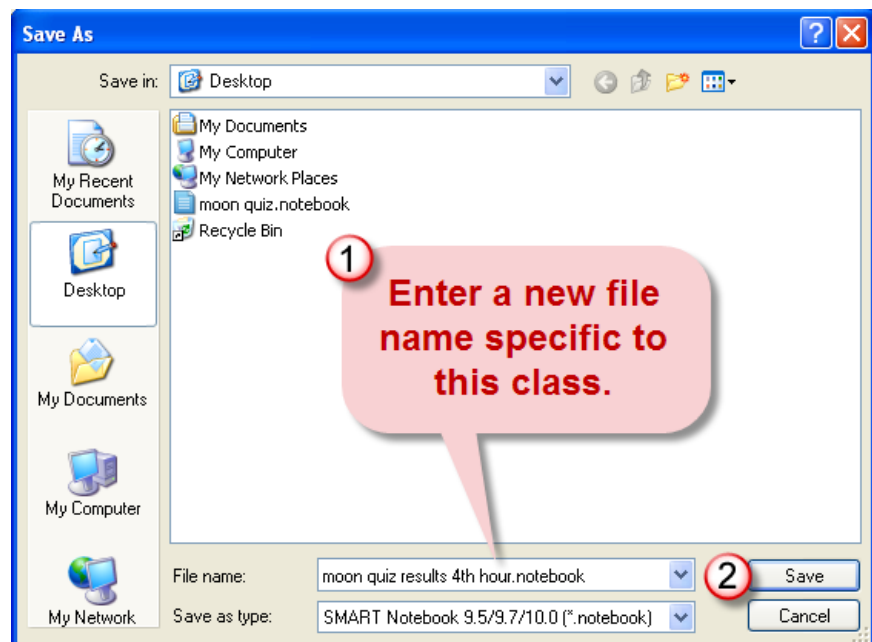
**Depending on your feedback choice, results for each question will be graphed at various points.**

**You have additional feedback options here.**

## Save Results



If you wish to save these results in your assessment document, click the File Menu and choose Save As.



1 Enter a new file name specific to this class.

Your original assessment file is now still available for future use.

Janetta Garton • Willard R-II Schools





## Disconnect Clickers

You can disconnect and turn off all clickers simultaneously. Students can disconnect their clickers by pressing and holding the Power button.

**Simultaneously disconnect and turn off all**

1

**Gradebook**

- Cake Decorating
- Biology**
- Anonymous Mode
- Add a Class

**Reports**

- Student Performance
- Class Performance

**Devices**

- My Receiver

**Biology (Period 4)**

Your class is started. Students can sign in.

Classroom name: WHS1

Your students should join this classroom.

Online: 3 / 25

Questions: 0

Weak Signal: 0

Low Batteries: 0

Lock Sign In Stop Class

Stopping this class turns off all connected clickers.

2

**To disconnect individual students:**

1

**Gradebook**

- Cake Decorating
- Biology**
- Anonymous Mode
- Add a Class

**Reports**

- Student Performance
- Class Performance

**Devices**

- My Receiver

**Students**

Status	Student ID	Last Name	First Name	Average	Practice
●	14472	Trevor	33.3%	1/3 (33.3%)	
●	14472	Dalton	0%	0/3 (0%)	
○	14472	Austin	0%	0/3 (0%)	
○	14472	Dylan	--	--	
○	14472	Hayden	--	--	
○	14472	Shelby	--	--	
○	14472	Nicholas	--	--	
○	14472	Landon	--	--	

2

**Select the student.**

**Log Off Student**

☐ Also ban this student for:

5 minutes

Cancel OK

3

**Dalton Alexander**

Properties Performance Results

Student ID: 3472

First name: Dalton

Tags: