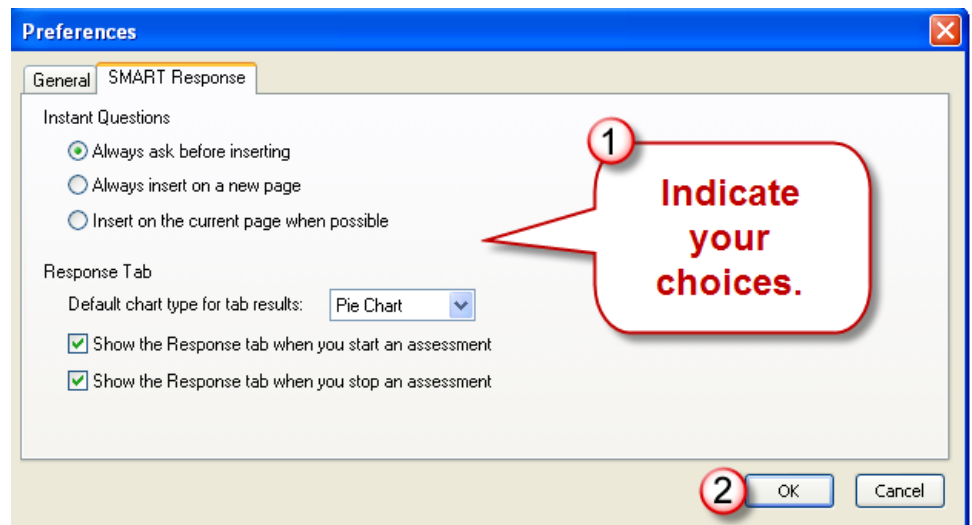
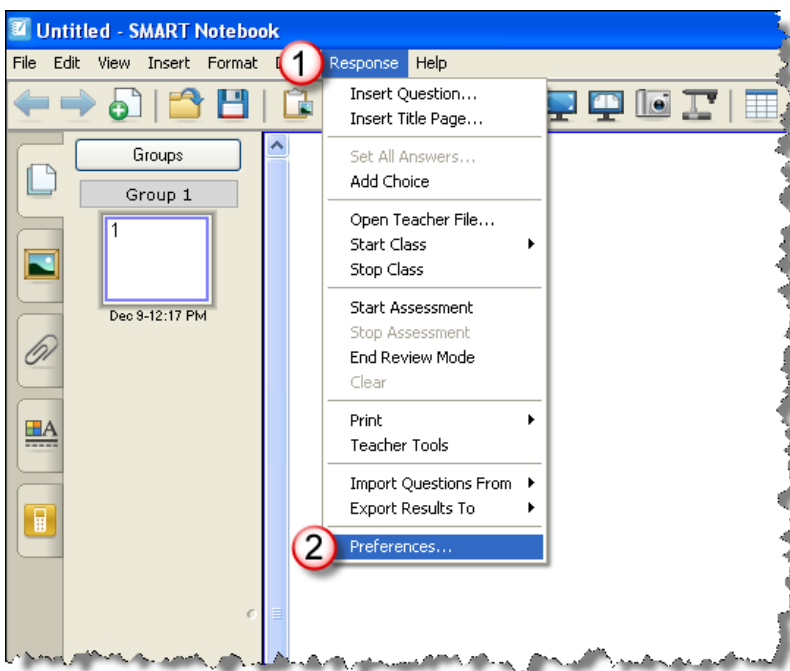


SMART Response Lesson VI: Additional Features and Troubleshooting

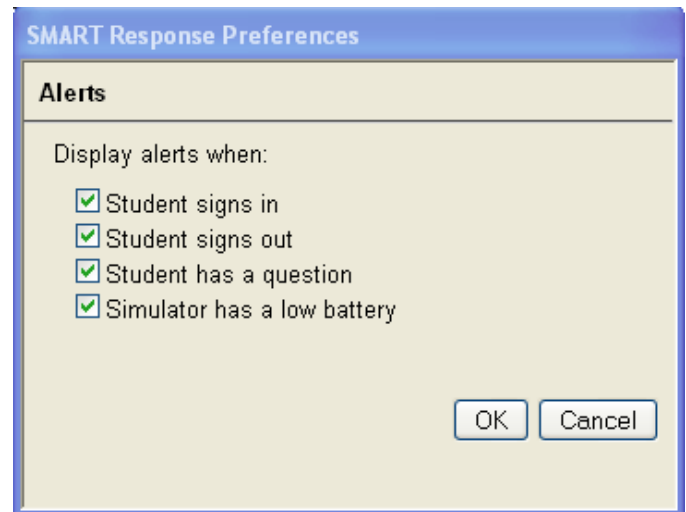
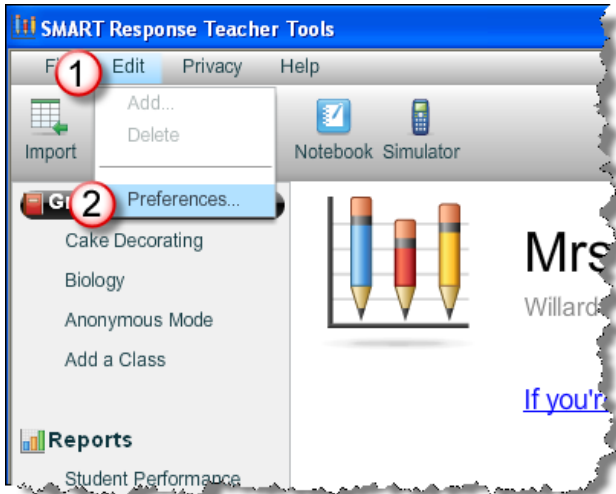
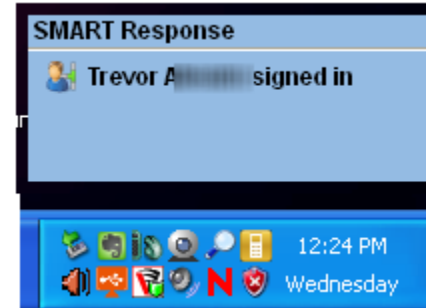
Preferences

You can customize the default behavior of some of SMART Response's features.



Alerts

In the Gradebook view of Teacher tools, you can indicate your preferences for when to receive an alert message.

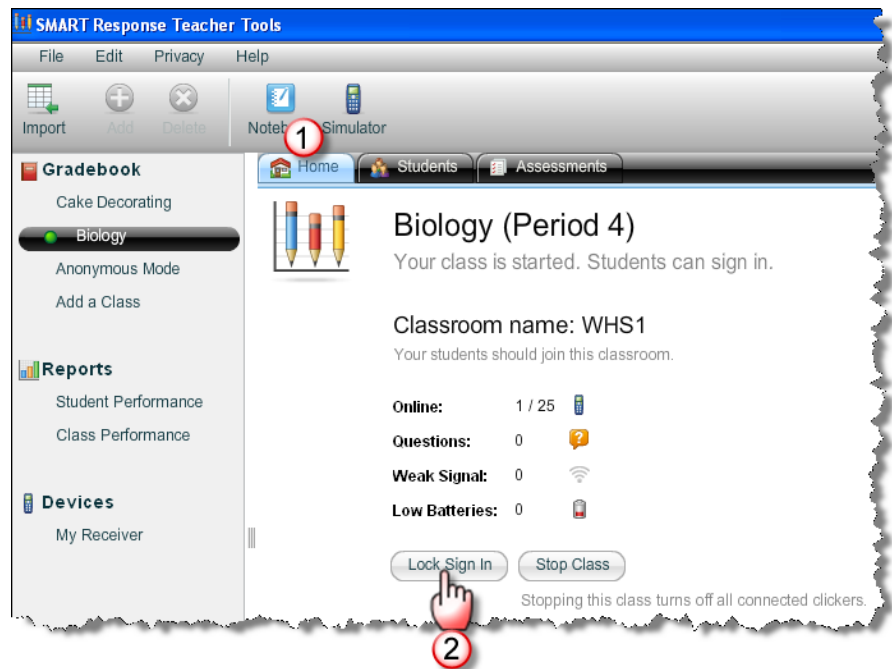


Locking Sign In

At any time after you start the SMART Response software, you can restrict students from signing in.

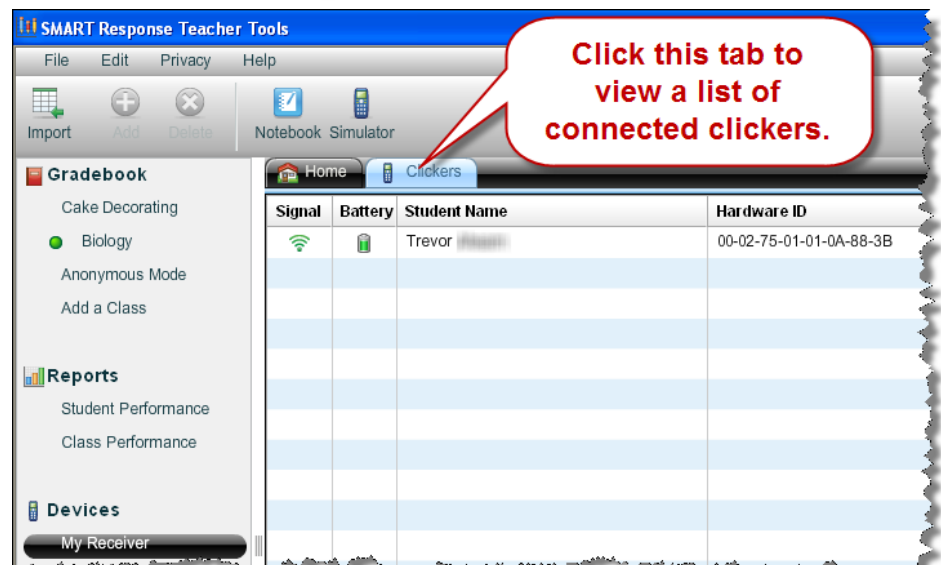
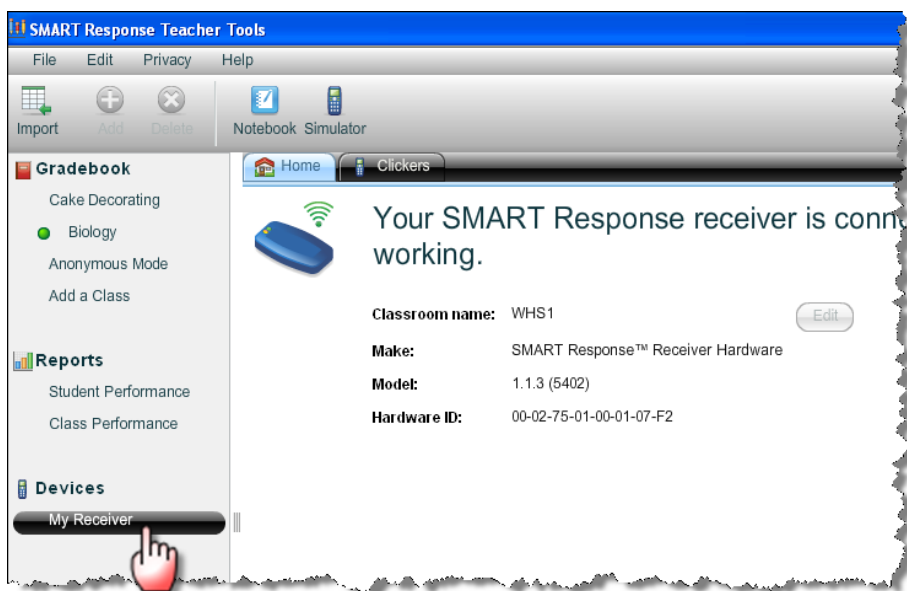
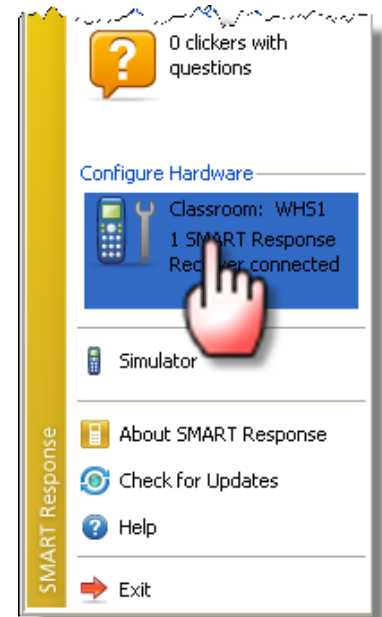
Sign in is unlocked by default and when you stop and restart the SMART Response or open a new class list.

If a student disconnects their clicker when Sign In is locked, he/she will be unable to sign in again until it is unlocked.



Monitoring the Clickers

Click the Response icon in the notification area.



Janetta Garton • Willard R-II Schools



Disconnect All Clickers

You can disconnect and turn off all clickers simultaneously.

Click the Response icon in the notification area.

Anonymous Mode
Students answer anonymously in this mode. Start a class to

Start a Class

Classroom name: WHS1
Your students should join this classroom.

Online: 1
Questions: 0
Weak Signal: 0
Low Batteries: 0

Lock Sign In Stop Class

Stop this class turns off all connected clickers.

Ask Questions
Open Notebook Software

Teacher Tools
Anonymous Mode
1 student signed in

View Questions
0 clickers with questions

Disconnect Individual Clickers

1 Select the student.

2 Click this button.

Status	Student ID	Last Name	First Name	Average	Practice	Quick Check	Gr. 4 OAT
●	4473	Ahearn	Trevor	56.9%	1/3 (33.3%)	5/5 (100%)	3/8 (37.5%)
○	4474	Dalton	Dalton	0%	0/3 (0%)	--	--
○	4475	Austin	Austin	0%	0/3 (0%)	--	--
○	4476	Dylan	Dylan	--	--	--	--
○	4477	Haydn	Haydn	--	--	--	--
○	4478	Shelby	Shelby	--	--	--	--
○	4479	Nicholas	Nicholas	--	--	--	--
○	4480	London	London	--	--	--	--

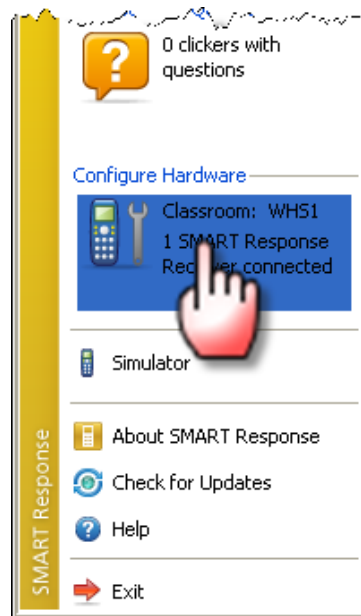
Trevor Ahearn Properties Performance Results

Student ID: 4473 First name: Trevor

Tags:

Checking the Receiver

Click the Response icon in the notification area.



Resetting a Remote

If a remote locks up, reset it:

1. Remove the batteries
2. Press and hold the T and F buttons for 5 seconds.
3. Reinstall the batteries.