

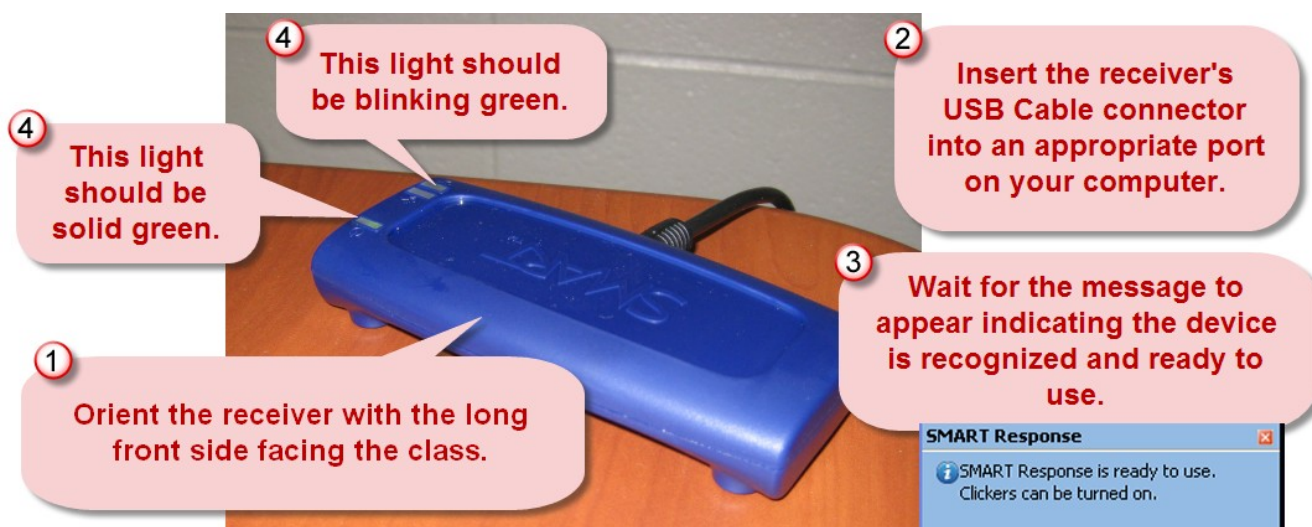
SMART Response Lesson I:

Anonymous with Instant Questions

To have the SMART Response software installed on your station complete a tech work order.

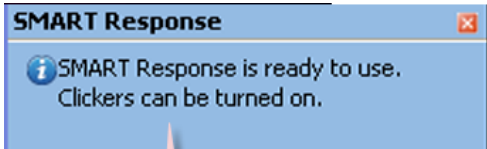
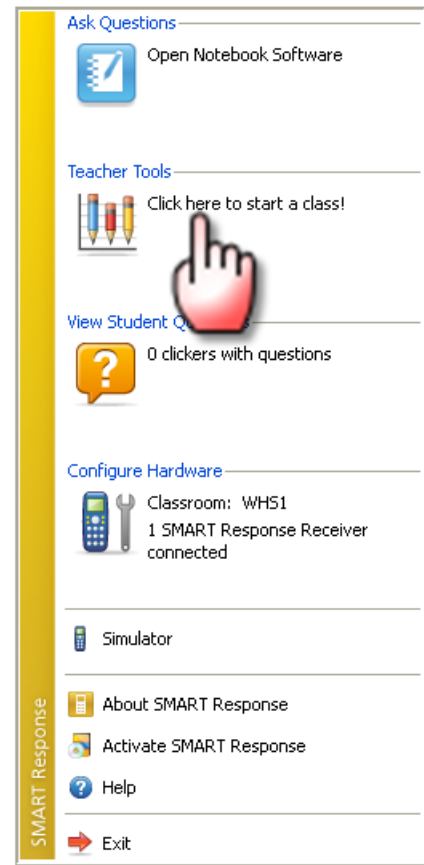
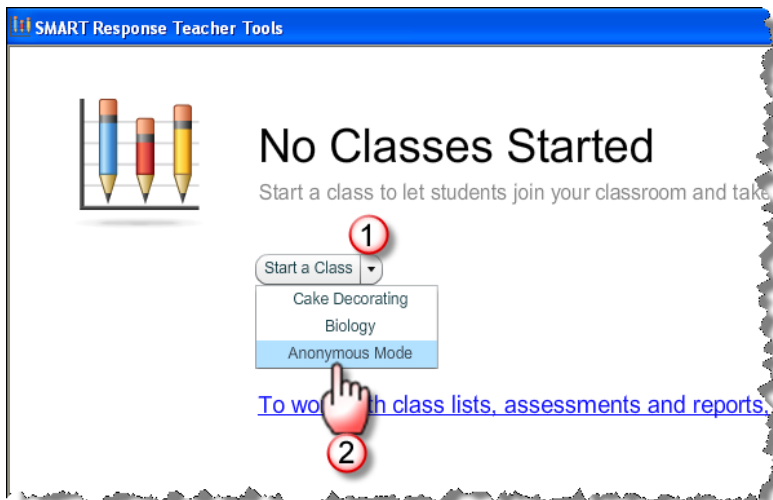
Anonymous Mode	Sign in Mode
You can operate the system without a class list	You must operate the system with a class list that identifies each student by name and a unique ID number (lunch pin).
Students can connect their clickers without identifying themselves.	Students can connect their clickers but must sign in with their assigned ID number (lunch pin).
Teachers can see how many clickers are connected.	Teachers can identify individual students as they sign in with their clickers.
Teachers can't save and evaluate student and class performance over time.	Teachers can save and evaluate student and class performance over time using the Gradebook feature.
Teachers can't generate student or class performance reports.	Teachers can generate student and class reports.
Teachers can see, export and print the total class score.	Teachers can see, export and print the total class score.
Teachers can see, export and print total scores for each question.	Teachers can see, export and print total scores for each question.
Teachers can't prevent a student from signing in, and can't remotely disconnect individual students.	Teachers can prevent individual students from signing in for a time interval, and can disconnect individual students.
Teachers can't identify students' names or their individual scores.	Teachers can see, export and print each student's score for each question and their total score.

Hardware Setup



Using Anonymous Mode

Click the Response icon in the notification area.

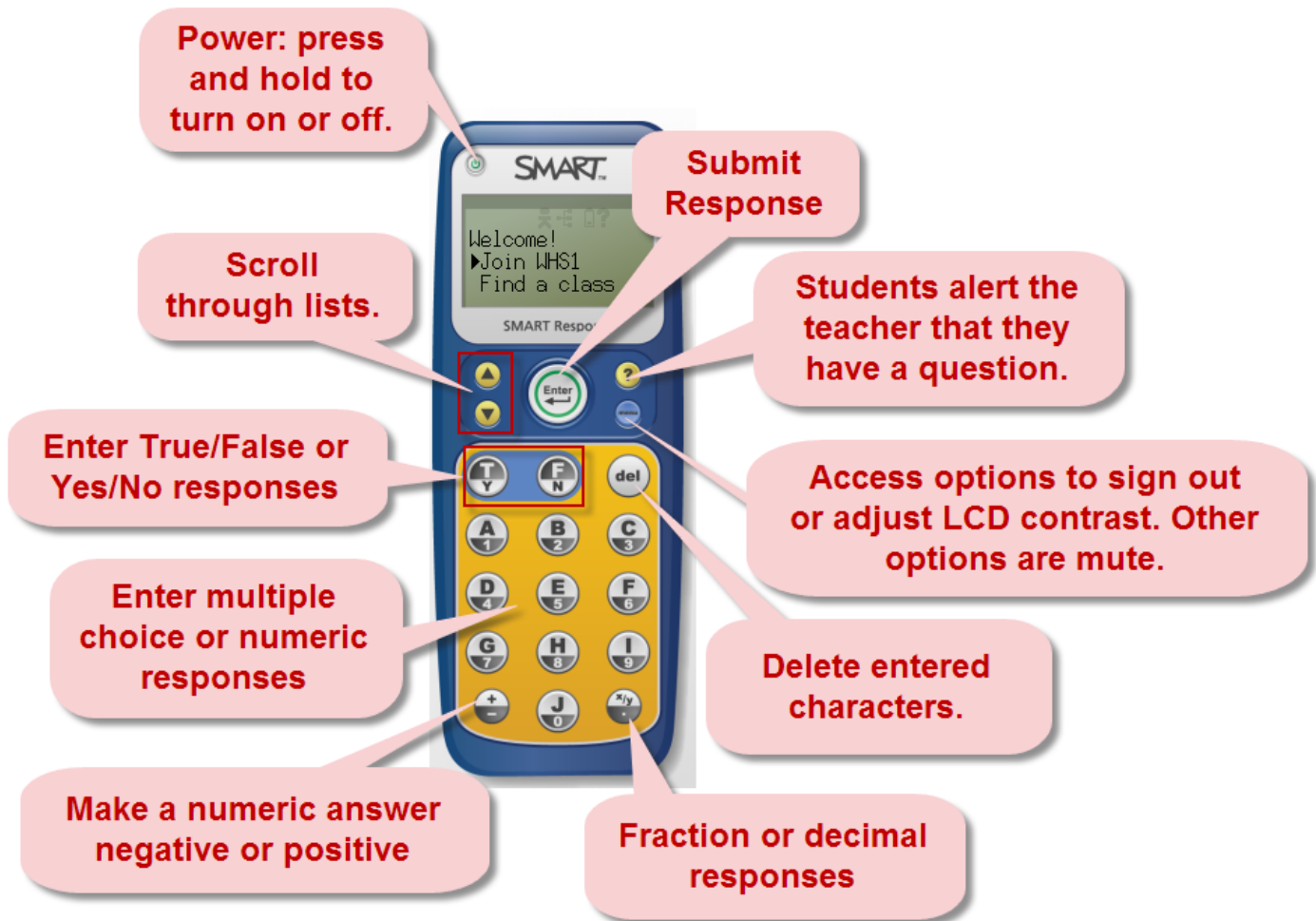


After this message appears in the bottom right corner, direct students to press and hold the power button on their remotes until words appear on the display.



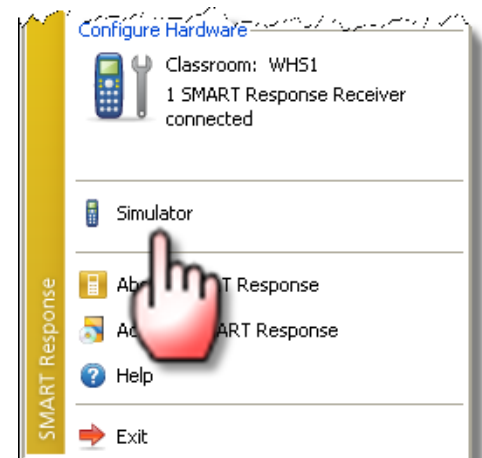
Students press enter to join.

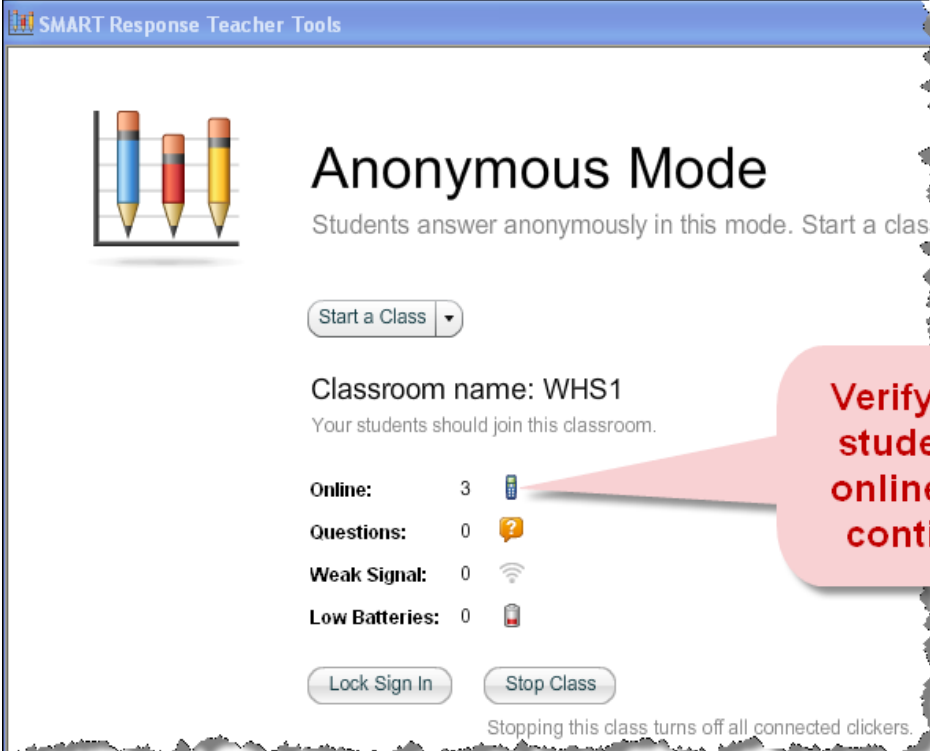
Clickers



Simulator

The simulator is an aid for demonstrating the clicker's functions. You can display the simulator using your station and a projector. This simulator works just like the hardware and is recognized by the receiver when started.





The screenshot shows the SMART Response Teacher Tools interface. At the top is a blue header with the text "SMART Response Teacher Tools". Below the header is a white area with a graphic of three colored pencils (blue, red, yellow) on the left. To the right of the pencils is the title "Anonymous Mode" in large black font, followed by the subtitle "Students answer anonymously in this mode. Start a class." in smaller grey font. Below the subtitle is a button labeled "Start a Class" with a dropdown arrow. Underneath is the text "Classroom name: WHS1" and "Your students should join this classroom." in grey. A list of statistics follows: "Online: 3" with a blue mobile phone icon, "Questions: 0" with an orange question mark icon, "Weak Signal: 0" with a grey Wi-Fi icon, and "Low Batteries: 0" with a red battery icon. At the bottom are two buttons: "Lock Sign In" and "Stop Class". Below these buttons is the text "Stopping this class turns off all connected clickers." in grey. A red speech bubble points to the "Online: 3" status, containing the text "Verify that all students are online before continuing." in red.


SMART Response Teacher Tools


Anonymous Mode


Students answer anonymously in this mode. Start a class.


Start a Class ▾

Classroom name: WHS1
Your students should join this classroom.

Online: 3 

Questions: 0 

Weak Signal: 0 

Low Batteries: 0 

Lock Sign In Stop Class

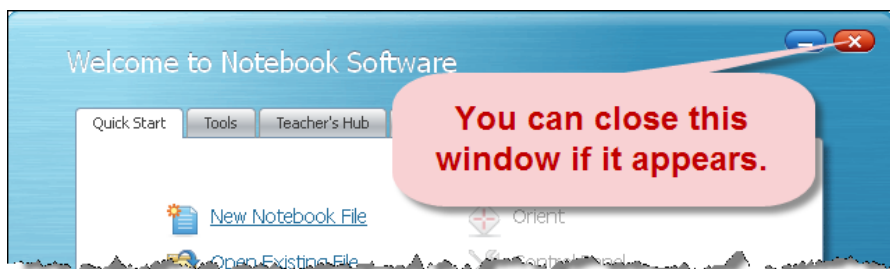
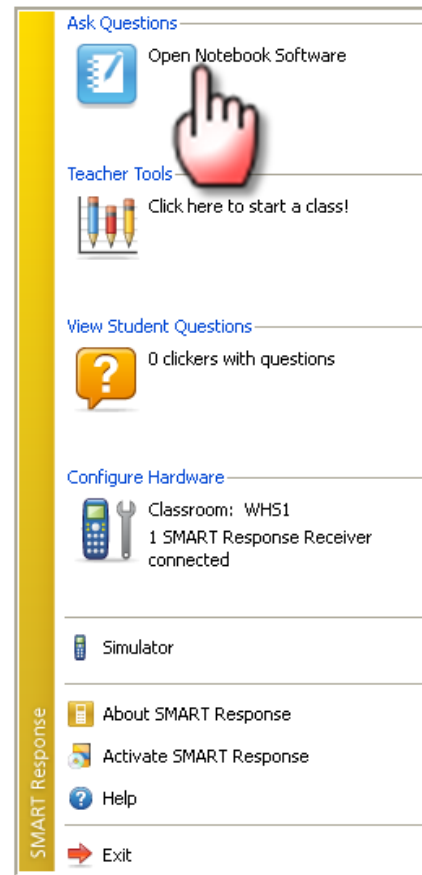
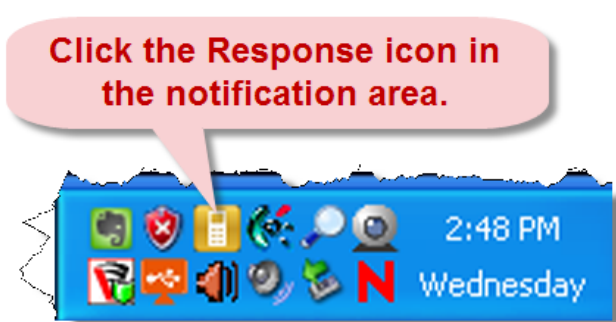
Stopping this class turns off all connected clickers.

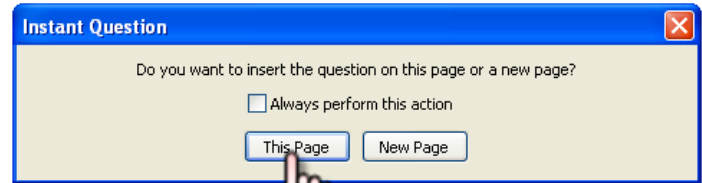
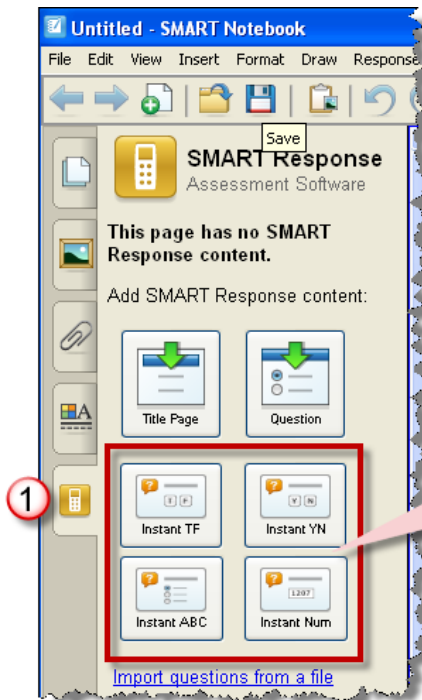
Verify that all students are online before continuing.

Instant Questions

Use the Instant Questions feature to quickly gather feedback from students without fully typing the questions in Notebook, or indicating correct answers. You can ask questions verbally, refer to questions in the textbook, on the markerboard, or on a worksheet. First start a class, either in Anonymous Mode or Sign in Mode.

If you want the students to see the class results, have a projector connected to your station and turned on. Otherwise, you alone can view the results on your station.





1 State the question, or direct your students to it in the book, on the worksheet, etc.



Use these arrows keys to navigate through the questions.



Before an assessment or question is closed, and before submitting by selecting Finish, students can go back and change answers.

1 The question immediately starts accepting answers.

2 You can see how many students have responded here.

3 Click here when all students have responded.

1 Answer?

Properties Progress Next Steps

In Progress:

Duration: 00:15:02

1 Students answered

Who are we waiting for? (Show)

[Stop this question](#)

3 If you wish to save these results, or ask a another question with a different format, click here. A new page will display and you can repeat the process.

1 Once you stop the question, a graph appears of the student responses.

2 Here you have options to copy this graph into this Notebook page, or change it to a bar chart.

3 If you do not wish to save these results, and want to ask a question with the same format, access the Response menu and choose Clear.

1 Answer?

Properties Results Next Steps

Summary

Duration: 00:09:34

Skipped (33%)

5 (33%)

8 (33%)

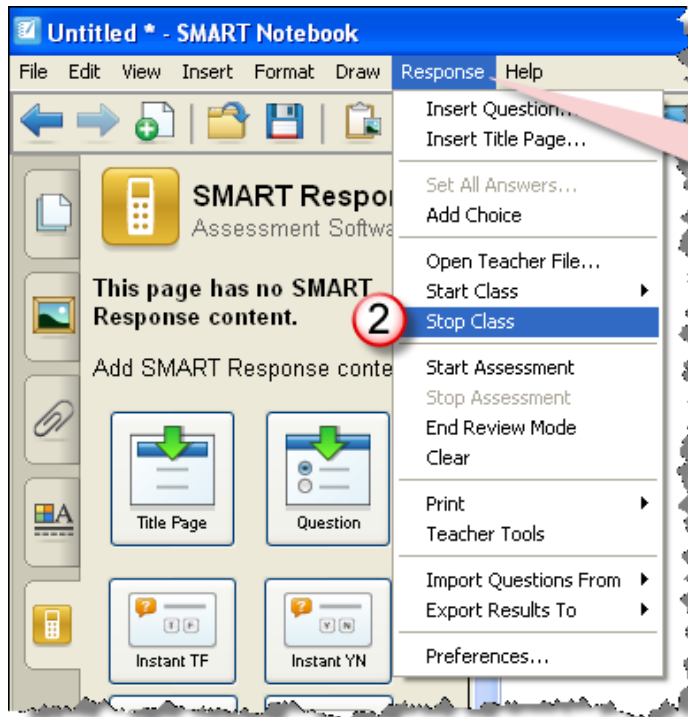
[Insert chart into Notebook](#)

[Show bar chart](#)

Details: (Show)

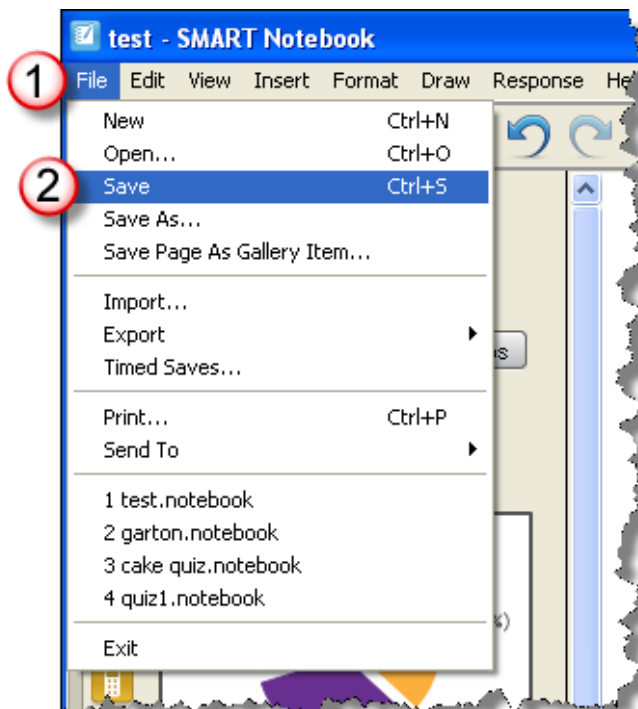
Response Help

- Insert Question...
- Insert Title Page...
- Set All Answers...
- Add Choice
- Open Teacher File...
- Start Class
- Stop Class
- Start Assessment
- Stop Assessment
- End Review Mode
- Clear**
- Print
- Teacher Tools
- Import Questions From
- Export Results To
- Preferences...



Once you've finished with the questions, access the Response menu and choose Stop Class.

Save Results



Print Results

